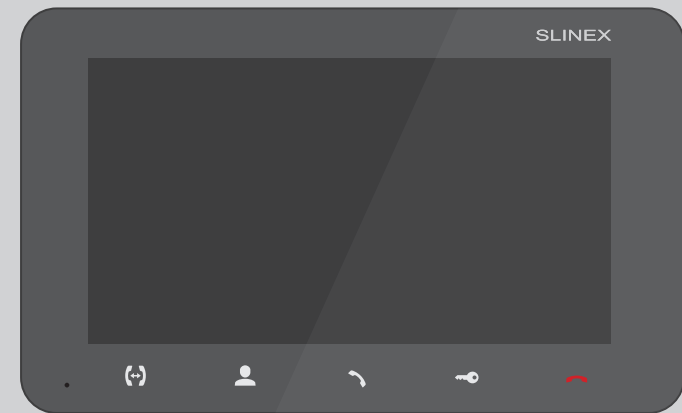


SERIES UNIQUE  
DIRECT

SM-07M

7" video door phone



User manual

Thank you for the  
choice of our equipment

SLINEX

{ Design. Uniqueness. Innovation }

**Attention!**



As a result of continuous upgrades and functionality improvements, technical characteristics of the device can be changed without any preliminary declaration. This manual can contain some inaccuracy or misprint. The owner reserves the right to make corrections to the information described in the user manual and device package. The last revision of this manual is available on [www.slinex.com](http://www.slinex.com)

### Safety instructions

Read and keep that manual.

The device installation process should be carried out by the qualified specialists.

Use the device from the -10 °C to +55 °C, always keep it within that temperature range.

Installation surface should be free from vibration and impact influence.

Keep this device far from open sources of heat, such as radiators, heaters, and ovens.

The device can be installed near other electronic equipment in case if the temperature of the environment does not exceed previously mentioned range.

The device should be protected from the direct influence of the natural phenomena, such as direct sunlight, rain or snow.

Don't use aggressive or abradant detergent for the device surface cleaning.

Use soft wet cloth or tissue to remove strong dirt.

Don't overpower outlets. It can cause fire or electric shock.

### Nature protection



Don't throw away the device with other industrial or nutritive trash if you see that symbol. Some regions have separation and recycling systems for the electronic equipment. Connect with local authorities to receive information about recycling of electronic equipment for your region.

### Rights and limitation of liability

All rights reserved. Any part of that document can not be published in any form, translated into other languages or reproduced in any way including electronic or mechanical.

Document recording and copying is strictly denied without owner permission.

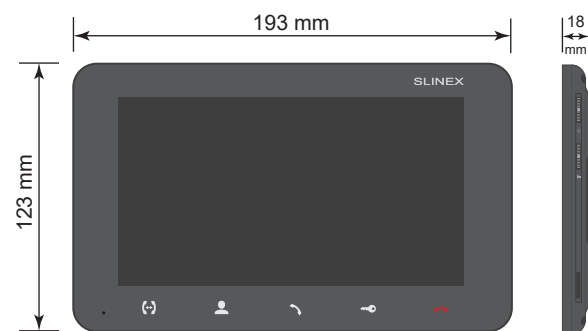
### Table of contents

1. Package .....	3
2. Specification .....	3
3. Description .....	4
4. Installation .....	5
4.1 Cable requirements .....	5
4.2 Schematic diagrams .....	6
4.3 Unit mount .....	7
5. Operation .....	8
5.1 Incoming call .....	8
5.2 Door panel and camera image monitoring .....	9
5.3 Incoming call redirection .....	10
5.4 Intercom .....	11
6. Monitor settings .....	11
6.1 Melody settings .....	12
6.2 Image settings .....	12
6.3 Date and time settings .....	12
6.4 System settings .....	13
6.5 Record settings .....	13
7. Limited Warranty .....	14

## 1. Package

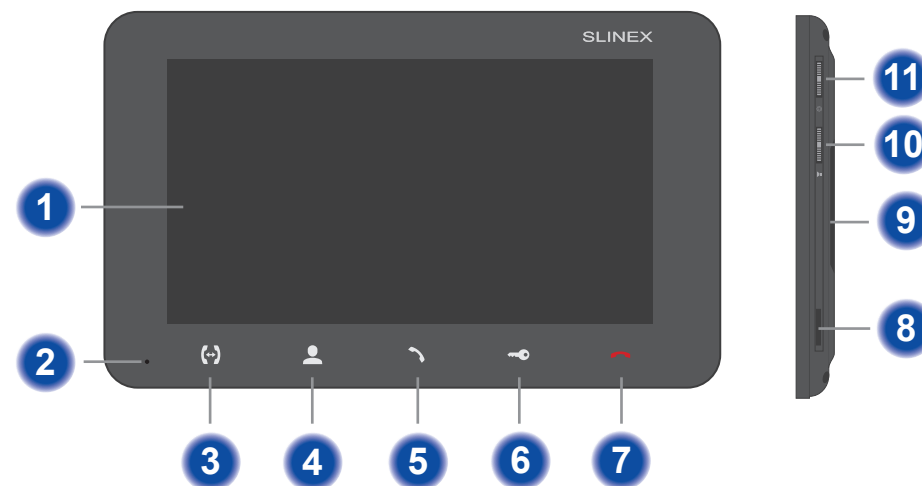
- SM-07M door monitor – 1 pc.
- Wall mounting bracket – 1 pc.
- Connection wires – 6 pcs.
- Mounting screws and nuts – 1 pkg.
- User manual – 1 pc.

## 2. Specification



Screen	7", color TFT (16:9)
Resolution	800×480 pixels
Video system	PAL/NTSC
Audio type	Half duplex
Call time	120 seconds
Internal memory	100 snapshots
Memory extension slot	MicroSD, up to 32 GB
Standby mode power consumption	3 W
Working mode power consumption	6 W
Power supply	Built-in power supply, ~100–240 V
Mounting type	Surface mount
Dimensions	193×123×18 mm
Working temperature	–10...+55 °C

## 3. Description



1	Display
2	Microphone
3	«Intercom» button – call another monitor or incoming call redirection
4	«Monitor» button – door panel or camera image monitoring
5	«Answer» button – incoming call answer and start conversation with the visitor
6	«Unlock» button – door unlocking
7	«Hang Up» button – stop conversation with the visitor / settings menu exit
8	MicroSD card slot
9	Speaker
10	Volume joystick: <ul style="list-style-type: none"> <li>move the joystick up or down during intercom or conversation to increase or decrease monitor speaker volume;</li> </ul>
11	Settings joystick: <ul style="list-style-type: none"> <li>move the joystick up while monitoring or conversation to save a photo or start video recording (depends on record settings). Move the joystick down to stop video recording;</li> <li>push the joystick in standby mode to enter settings menu;</li> <li>move joystick up or down to move through the settings menu (next/previous parameter);</li> <li>push the joystick on any parameter to change its value. Change the value of current parameter by moving joystick up or down and then push the joystick again to save current parameter.</li> </ul>

## 4. Installation

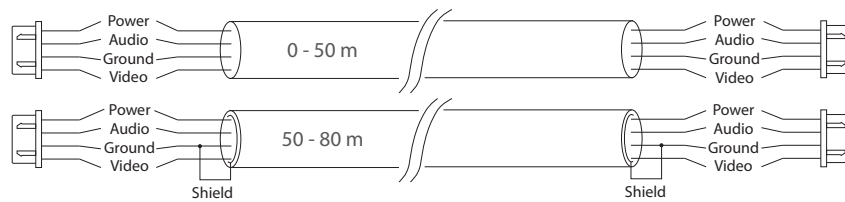
### 4.1 Cable requirements

Disconnect all power cables before device installation.

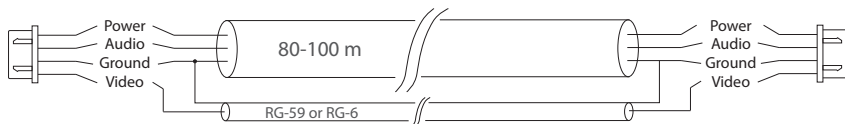
This device can be connected with such cable types depends on the distance between door monitor and door panel:

a) Use 4-wire cable with such parameters:

- distance up to 25 meters use a cable with 0,22 mm<sup>2</sup> square of one wire;
- distance 25 to 50 meters use a cable with 0,41 mm<sup>2</sup> square of one wire;
- distance 50 to 100 meters use a cable with 0,75 mm<sup>2</sup> square of one wire.

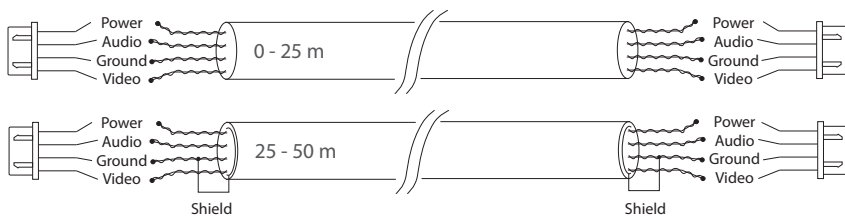


b) If the distance between door monitor and door panel is between 80 and 100 meters then use a 3-wire cable with 0,75 mm<sup>2</sup> square of one wire and RG-59 or RG-6 coaxial cable for the video signal.



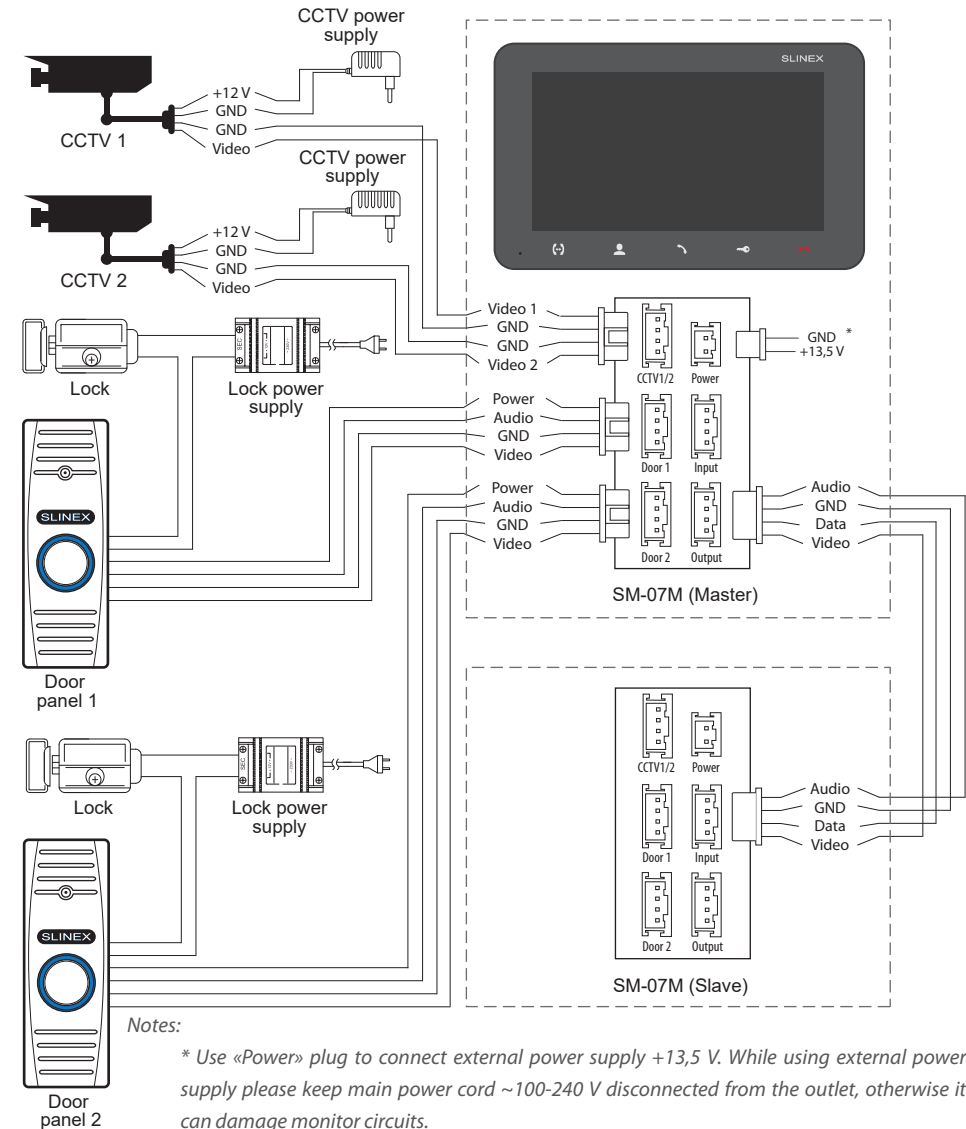
c) Shielded or non-shielded twisted pair (not recommended):

- distance up to 25 meters non-shielded twisted pair can be used;
- distance 25 to 50 meters shielded twisted pair should be used.



### 4.2 Schematic diagrams

SM-07M door panels, cameras and locks connection.



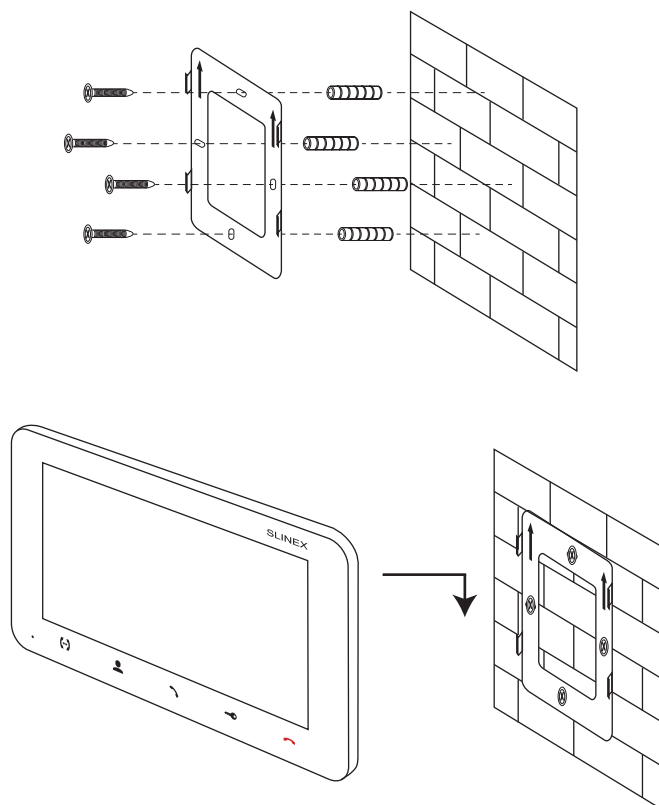
Notes:

\* Use «Power» plug to connect external power supply +13,5 V. While using external power supply please keep main power cord ~100-240 V disconnected from the outlet, otherwise it can damage monitor circuits.

\*\* Door panels, cameras, power supplies and locks, described on the diagram are optional devices and are not included into monitor kit.

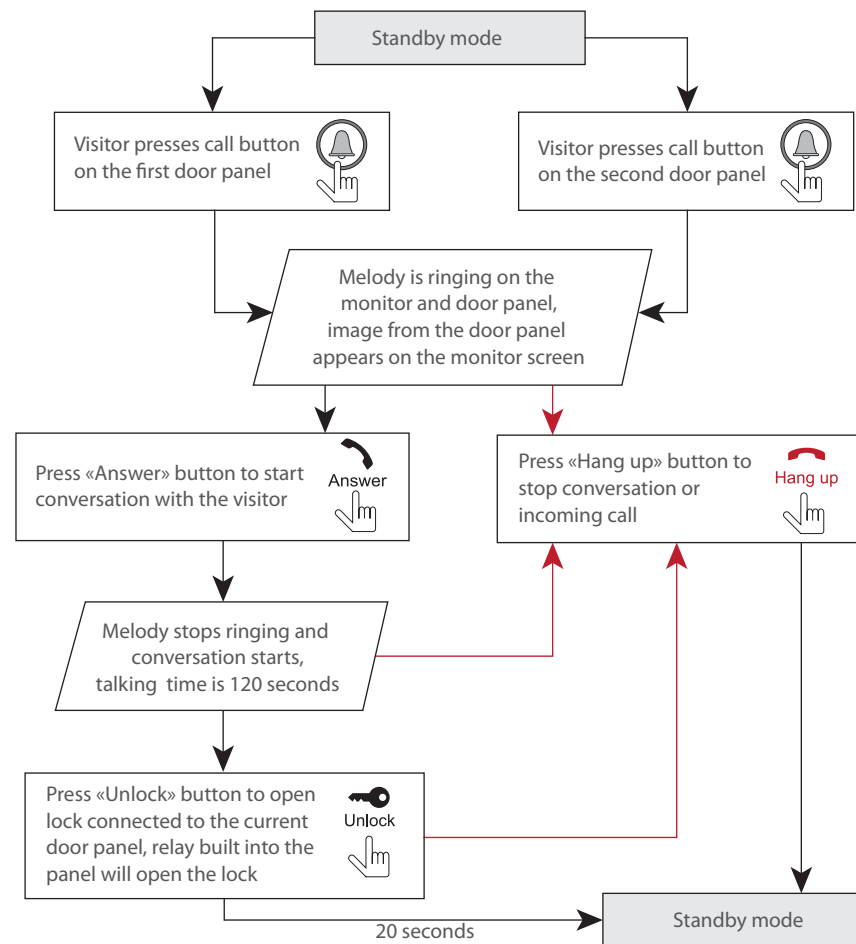
### 4.3 Unit mount

- 1) Take the surface mount bracket from the kit and situate it 150-160 cm from the floor line.
- 2) Mark and drill four holes in the wall.
- 3) Take four nuts from the kit and hammer them into the drilled holes.
- 4) Fix surface mount bracket on the wall by four screws from the kit.
- 5) Connect all communication wires and fix the monitor on the surface mount bracket.




### 5. Operation

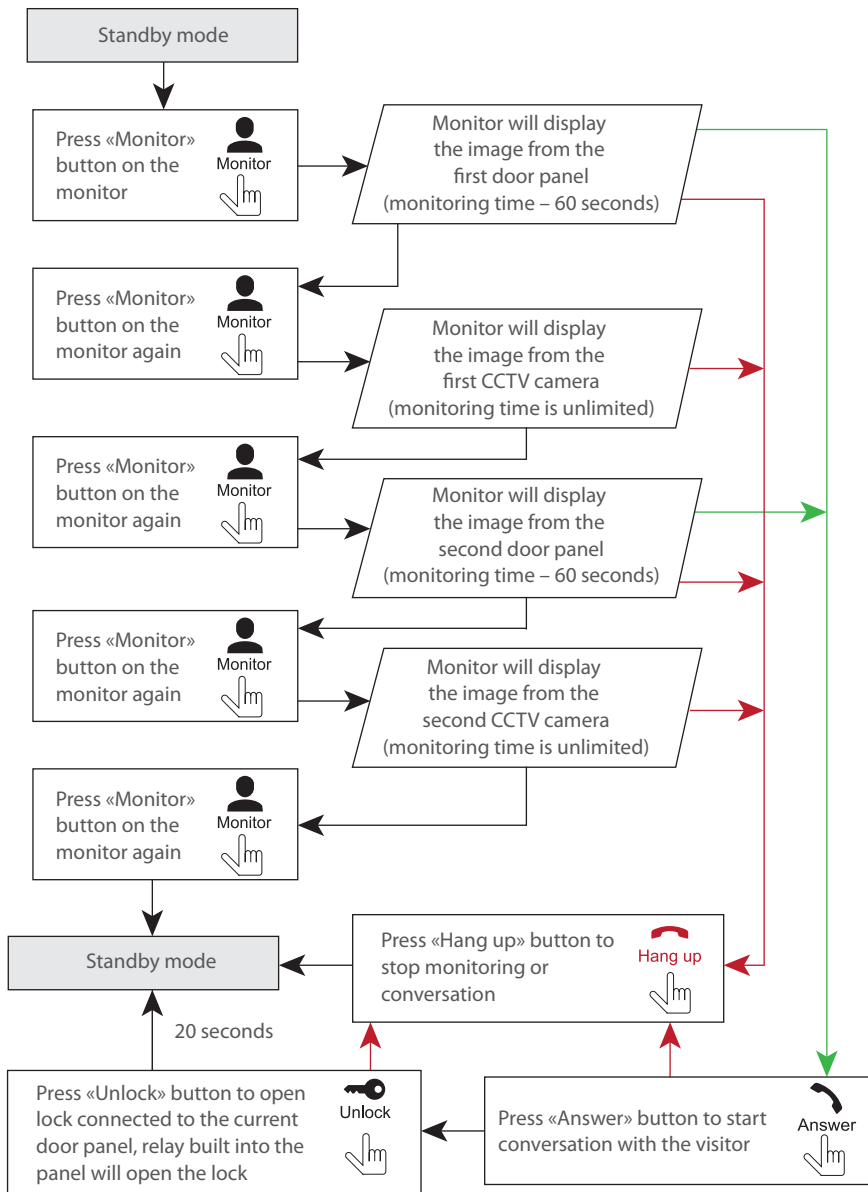
#### 5.1 Incoming call



Notes:

- 1) Monitor will be automatically switched into standby mode if the user doesn't answer incoming call during 60 seconds;
- 2) Image and sound from the door panel will be active during 20 seconds after the moment user presses  button. It let the user know if the visitor passed through the door.

### 5.2 Door panel and camera image view

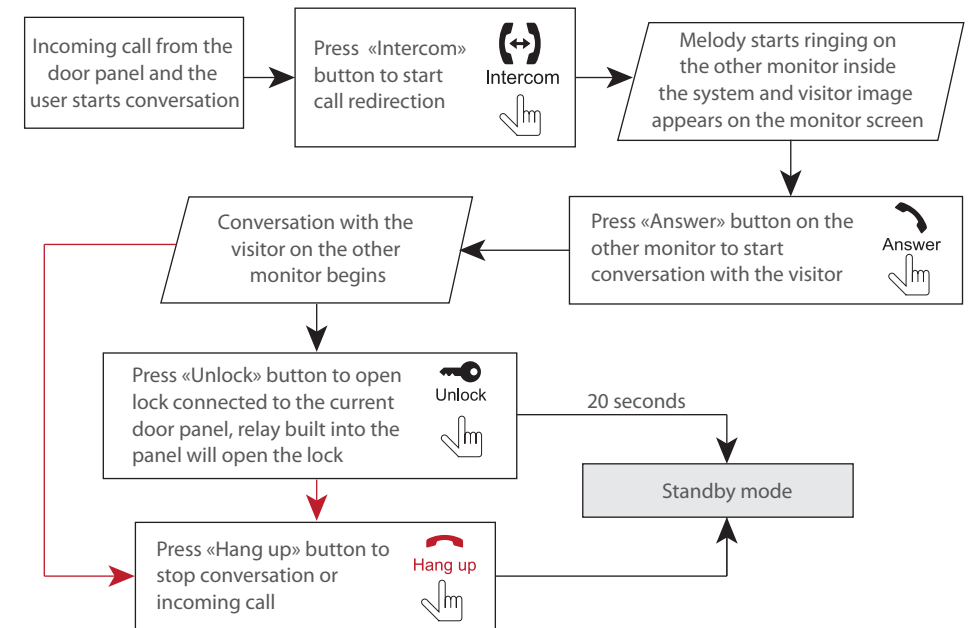


Notes:

- 1) If only one door panel connected to the monitor then you can escape monitoring mode by pressing «Monitor» button one more time. (all other sources of video signal should be disabled in the monitor settings).
- 2) If several monitors connected into one system, the user can view the image from door panels and cameras on any monitor inside this system. The image will be transferred from the «Master» monitor door panels and cameras to the «Slave» monitors.
- 3) If someone press call button on the door panel while monitoring is active then the image from this door panel appears on the monitor screen and call melody starts. Press «Answer» button to start conversation.

### 5.3 Incoming call redirection

Two monitors connected into one system are used.

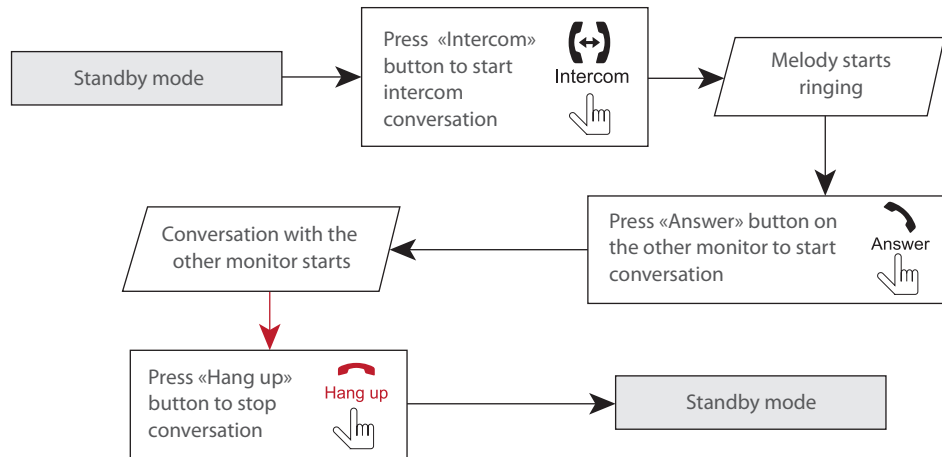


Note:

If incoming call was successfully redirected to the other monitor then current monitor will enter standby mode.

### 5.4 Intercom

Two monitors connected into one system are used.



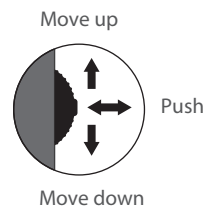
Note:

If somebody presses call button on the door panel while intercom is active then the image from the door panel appears on the monitor screen and call melody starts. Press «Answer» button to start conversation with the visitor.

## 6. Monitor settings

Settings joystick situated on the right side of the monitor case. It has several functions:

- push the joystick in stanby mode to enter monitor settings;
- move the joystick up or down to change current parameter of the monitor settings;
- push the joystick again to choose current parameter and move it up or down to change current parameter value;
- push the joystick one more time to save current parameter value.



### 6.1 Melody settings

Enter monitor settings in the way like it described on the previous page:

Ring select				15
Ring time				30s
Ring vol 1	08:00 - 12:00			04
Ring vol 2	12:00 - 18:00			06
Ring vol 3	18:00 - 08:00			03
Exit				

**Ring select** – ring melody selection (16 melodies are available);

**Ring time** – melody ringing time in seconds;

**Ring vol 1** – melody ringing volume for the first time zone;

**Ring vol 2** – melody ringing volume for the second time zone;

**Ring vol 3** – melody ringing volume for the third time zone;

**Exit** – monitor settings exit.

Note:

If there is some time interval between time zones then maximum volume will be applied during this time interval.

### 6.2 Image settings

English				
Brightness				050
Chroma				050
Contrast				050
Exit				

**English** – interface language selection;

**Brightness** – image brightness level tuning;

**Chroma** – image chroma level tuning;

**Contrast** – image contrast level tuning;

**Exit** – monitor settings exit.

### 6.3 Date and time settings

Time	2015-06-08	15:49		
Key tone				Off
Reboot				
Version	1-0-8	2017-05-01		
Exit				

**Time** – date and time settings;

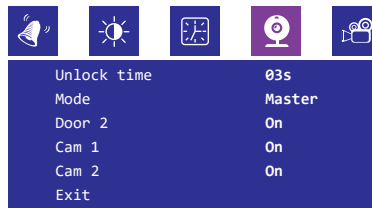
**Key tone** – touch button sounds enable (On) or disable (Off);

**Reboot** – reboot the monitor;

**Version** – current software version and release date;

**Exit** – monitor settings exit.

## 6.4 System settings



**Unlock time** – lock relay activation time;

**Mode** – select «Master» if all door panels and cameras connected to this monitor, otherwise select «Slave» if this monitor connected as a secondary in the system;

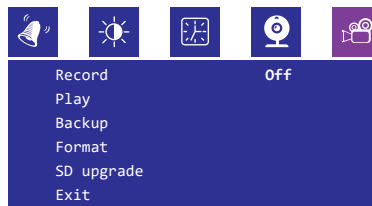
**Door 2** – include (On) or exclude (Off) Door 2 from the monitoring list;

**Cam 1** – include (On) or exclude (Off) Camera 1 from the monitoring list;

**Cam 2** – include (On) or exclude (Off) Camera 2 from the monitoring list;

**Exit** – monitor settings exit.

## 6.5 Record settings



**Record** – monitor record mode: «Off» – snapshots recording;

«On» – video recording;

**Play** – snapshots or video playing. Move  joystick up or down to go to the next/previous file playing;

**Backup** – snapshots backup from internal memory to microSD card;

**Format** – internal memory and microSD card formatting;

**SD upgrade** – monitor software upgrade. Copy upgrade files to microSD card root folder, then insert microSD card with upgrade files into monitor slot and select «SD upgrade» → «Yes». Wait until monitor will be rebooted;

**Exit** – monitor settings exit.

## 7. Limited warranty

Manufacturer guarantees product normal functioning during the warranty period if the user keeps all safety instructions described in that manual.

Warranty period is 12 months from the moment of the product purchasing (warranty period could be extended up to 24 months or more, depending on the local regulations).

Warranty period allows user to make guarantee repair in cases when normal functioning of the product was violated by the fault of manufacturer and the user haven't offend transporting, installation and working conditions.

This limited warranty does not cover any damage to the product that results from improper installation, accident, abuse, misuse, natural disaster, insufficient or excessive electrical supply, abnormal mechanical or environmental conditions, or any unauthorized disassembly, repair or modification.

Warranty void in such cases:

- the product was damaged by the fault of the customer;
- the product wasn't properly installed according recommendations from the manual;
- the sticker on the backside of the product was broken;
- the product was not used for its intended function.

This limited warranty covers only repair, replacement, refund or credit for defective products, as provided above. Manufacturer is not liable for, and does not cover under warranty, any damages or losses of any kind whatsoever resulting from loss of, damage to, or corruption of, content or data or any costs associated with determining the source of system problems or removing, servicing or installing products. This warranty excludes third party software, connected equipment or stored data. Manufacturer is therefore not liable for any losses or damage attributable to third party software, connected equipment or stored data.

In the event a product has been discontinued, manufacturer shall either repair the product, offer to replace it with a comparable product or provide a refund at the lesser of the purchase price or the product's current value.

Repaired or replacement products will continue to be covered by this limited warranty for the remainder of the original warranty term.